

# 2018 Sage-grouse Population Triggers Analysis

---

*Ann Moser*

*Wildlife Staff Biologist*

*Idaho Department of Fish and Game*

*August 30, 2018*





Findings in this report are preliminary in nature and not for publication without permission of the Director of the Idaho Department of Fish and Game.

The Idaho Department of Fish and Game adheres to all applicable state and federal laws and regulations related to discrimination on the basis of race, color, national origin, age, gender, or handicap. If you feel you have been discriminated against in any program, activity, or facility of the Idaho Department of Fish and Game, or if you desire further information, please write to: Idaho Department of Fish and Game, PO Box 25, Boise, ID 83707; or the Office of Human Resources, U.S. Fish and Wildlife Service, Department of the Interior, Washington, DC 20240.

This publication will be made available in alternative formats upon request. Please contact the Idaho Department of Fish and Game for assistance.

## Introduction

The *Federal Alternative of Governor C.L. “Butch” Otter for Greater Sage-grouse Management in Idaho* (Governor’s Sage-Grouse Task Force 2012) proposed 2 metrics for monitoring sage-grouse populations and developed corresponding population triggers that would result in land management changes within a Conservation Area. The metrics are maximum number of males and lambda ( $\lambda$ ), or the finite rate of change. There are 4 Conservation Areas (CAs) within Idaho: Desert, Mountain Valleys, Southern, and West Owyhee. Within those are areas identified as Core, Important, and General management zones for sage-grouse.

Within the Governor’s alternative, hard population triggers were defined as:

- A 20 percent decline in the current 3-year average of total maximum number of males counted on lek routes compared to the 2011 maximum male baseline **and** an average finite rate of change ( $\lambda$ ) significantly below 1.0 within Core or Important habitat within a Conservation Area over the same 3-year period.

Soft population triggers were defined as:

- A 10 percent decline in the current 3-year average of total maximum number of males counted on lek routes compared to the 2011 maximum male baseline **and** an average finite rate of change ( $\lambda$ ) significantly below 1.0 within Core or Important habitat within a Conservation Area over the same 3-year period.

In September 2015, a Record of Decision was signed for the *Idaho and Southwestern Montana Sub-regional Greater Sage-grouse Proposed Land Use Plan Amendment and Final Environmental Impact Statement* (BLM 2015). This approved document incorporated the Governor’s population triggers, but the management zone boundaries were refined and modified during the plan development. In addition, the term “Core” was changed to “Priority.” In this document we follow the “G2” map for Priority, Important, and General Habitat Management Areas (i.e., PHMA, IHMA, and GHMA), as documented in the Environmental Impact Statement (BLM 2014).

## Methods

We intersected all Idaho leks with the G2 sage-grouse habitat map and leks were assigned to a Conservation Area and Habitat Management Area (PHMA, IHMA, and GHMA). One-hundred fifteen leks were not in classified habitat. Some of these leks are in agricultural areas on private land, but the birds likely nest and winter in adjacent sagebrush habitats. We used the 10-km nesting buffer identified in Appendix B of the Governor’s Plan (Governor’s Sage-grouse Task Force 2012), to assign each lek to the appropriate HMA. These leks are attributed as “PHMA by buffer,” etc., to maintain their unique identity, but are included in the analyses for their assigned HMA. Six leks were >10 km from any mapped Priority, Important, or General habitat.

## Lek Routes

Idaho Department of Fish and Game utilizes lek routes to monitor population trend. A lek route, as defined by Connelly et al. (2003), is a “census of a group of leks that are relatively close and represent part or all of a single breeding population.” These leks must be close enough to allow all leks on the route to be counted from 0.5 hours before official sunrise to 1.5 hours after sunrise. Lek routes are counted 3-4 times each spring, typically from late March to early May, depending on elevation. Counts are not conducted during inclement weather (e.g., rain or snow, or winds >15 kph). Observers record the number of males at each lek on each survey day. The maximum number of males on a lek route is the highest number of males counted on one survey day.

Some lek routes are split between different HMAs. Because the data for a route cannot be split, we assigned a lek route to the HMA which had the higher proportion of its leks within it (Appendix A).

The lek route analysis compares the current 3-year average of males in each CA and HMA to the maximum number of males in 2011 (i.e., 2011 baseline). In 2011, we had 76 lek routes that qualified for inclusion in this analysis (Figure 1), which included 412 leks. This represents about 25% of the leks in the Idaho lek database.

$$\% \text{ change} = \left( \frac{\text{Current 3year average} - \text{2011 total males}}{\text{2011 total males}} \right) * 100$$

*If % change is  $\leq -20\%$  then a hard population trigger has been tripped.*

*If % change is  $-10\%$  to  $-20\%$  then a soft population trigger has been tripped.*

## Lambda

Lambda is simply the population size in time t+1 divided by the population size in time t. A stable population is represented by a  $\lambda$  (lambda) value of 1.0. If  $\lambda < 1.0$  the population is decreasing and if  $\lambda > 1.0$  the population is increasing.

Because significance for lambda was not defined in the Governor’s Alternative, we consulted with statisticians to determine a valid statistical approach that also made sense biologically. Based on these discussions, we defined significance for lambda by the 90% confidence interval (Scheaffer et al. 1996) around the lambda calculated from the 1<sup>st</sup> year to the 3<sup>rd</sup> year (e.g., lambda from 2016 to 2018; E.O. Garton, personal communication). We concluded that a population decline from year 1 to year 3 would be more important biologically than a 3-year average. If the 90% confidence interval (CI) is less than, and does not include 1.0, then the finite rate of change is considered significant. The finite rate of change and variance will be calculated following Garton et al. (2011). Garton et al. (2011) used a population reconstruction model to calculate lambda and estimate the minimum population of sage-grouse back through time. The main requirement of the model estimate is that counts on a lek must occur in at least 2 successive years or in this case every other year (i.e., 2016 and 2018).

Ratio estimation under classic probability sampling designs—simple random, stratified, cluster, and probability proportional to size—assumes the sample units (leks counted in alternate successive years in this case) are drawn according to some random process but the strict requirement to obtain unbiased

estimates is that the ratios measured represent an unbiased sample of the ratios (i.e., finite rates of change) from the population or other area sampled.

Any count data can go into this analysis, as long as it meets the time of day and weather requirements for counting leks. Because the model uses ratios of counts cumulated within a larger area, lek counts may be included for leks that were visited 1 or more times within the season (we are currently recommending 2 visits). Aerial survey data that has been carefully reviewed (e.g., meets time and weather requirements and conducted by experienced pilots and observers) can also be included.

### **Database and other lek monitoring priorities**

In addition to lek trend monitoring, there are other reasons for surveying particular leks within a given year. Lek database maintenance priorities are:

1. Visiting undetermined leks that need 1 more visit to be reclassified as unoccupied (5 consecutive surveys with zero birds results in an unoccupied status).
2. Visiting unoccupied leks that haven't been visited in >5 years (unoccupied leks need to be visited every 5-10 years to maintain that status).
3. Maintaining updated occupancy status by visiting occupied leks at least once every 5 years.
4. Re-visiting newly discovered leks to validate whether the observation is of a true lek and not a random occurrence.

Other priorities for surveying leks might be to evaluate response to infrastructure projects, wildfire, or habitat improvements. Although lek surveys for database or other priorities are biased (i.e., they are not a statistical sample of the population), they are important nonetheless.

### **Sample size estimation for lambda**

We calculated lambda and the variance based on the 2015 to 2017 data for PHMA and IHMA in each CA. Using these values, we used the sample size estimation formula for ratios from Scheaffer et al. (1986, page 139) to estimate the number of leks that need to have counts in both 2016 and 2018 to produce an estimate of  $\lambda \pm 0.20$ .

Rather than sampling from only leks that were counted in 2016, we opted to increase our count efforts to assure broader coverage statewide. Since lek route leks will automatically be included in leks counted both years, we wanted to assure that an unbiased proportion of other leks (i.e., leks not on lek routes) were included in the lambda calculations. We multiplied the sample size estimate by the proportion of other leks to get the number of these leks that should be sampled in 2018. After assigning database priorities 1-4 above, we randomly selected the remaining leks to reach the target number. We then counted the total number of leks that would be counted both years (2016 and 2018) in each CA/HMA. We adjusted the target number upwards if we were still not meeting the estimated sample size. Using this sample size estimation process, we needed to count a minimum of 1,127 leks statewide in 2018; of these, 556 were on lek routes, 554 were randomly assigned leks, and 117 were database or other priorities. Database priorities included 45 leks for priority 1, 3 for priority 2, 17 for priority 3, and

17 for priority 4. We also targeted to survey 34 leks that were within the 2015 Soda Fire in the West Owyhee Conservation Area.

## Results and Discussion

We counted 1,466 leks in 2018. Of all leks counted, 693 were active in 2018, 658 were inactive, 108 had an unknown status, and 7 were new. Surveyed leks with an unknown status were either surveyed only once by air (helicopter or fixed wing using infrared imagery) with no birds detected or a survey was conducted during inclement weather (i.e., 1 survey was insufficient to determine status). Of the 5 new leks that were discovered in 2017, 4 were confirmed as occupied leks in 2018.

Statewide, male attendance at lek routes in 2018 was down 18% from 2017 and down 32% from 2016 (this includes routes mapped in General habitat). All HMAs, except Southern Priority, exhibited significant declines over the current 3-year period (i.e.,  $\lambda < 1.0$ ; Table 2).

Two hard population triggers were tripped in 2018 –Desert Important and Mountain Valleys Priority (Table 2). Lek routes in Desert Important were down 22% from the 2011 baseline with  $\lambda = 0.736$  (0.616–0.856 90% CI) from 2016–2018. Lek routes in Mountain Valleys Priority were down 21% from the 2011 baseline with  $\lambda = 0.713$  (0.616–0.810 90% CI) from 2016–2018.

Desert Priority tripped a soft population trigger in 2018. Lek routes were down 18% from the 2011 baseline with  $\lambda = 0.680$  (0.591–0.769 CI) from 2016–2018.

Although there are no lek routes in West Owyhee Important, data from all leks in the area resulted in a  $\lambda$  significantly less than one ( $\lambda = 0.488$ , 0.245–0.731 90% CI). Although we did not sample a sufficient number of leks (Table 1), the  $\lambda$  value is much less than one and indicates a concerning decline. West Owyhee IHMA is already operating under an adaptive regulatory trigger because >20% of the key habitat in West Owyhee IHMA was lost in the 2015 Soda Fire. In other words, the West Owyhee Important is currently being managed as Priority habitat (BLM 2015).

As per the Governor’s Plan and the 2015 BLM ARMPA, an interagency technical team will evaluate causal factors of soft and hard population triggers and may recommend management actions. This team is expected to initiate this analysis in late Fall 2018.

## Literature Cited

Bureau of Land Management (BLM). 2015. Record of decision and approved resource management plan amendments for the Great Basin region, including the greater sage-grouse sub-regions of Idaho and Southwestern Montana. U.S. Department of the Interior, Bureau of Land Management, Washington, DC.

Bureau of Land Management (BLM). 2014. Sage-grouse Habitat Management Areas of the Great Basin Region, Idaho-SW Montana sub-region, greater sage-grouse Environmental Impact Statement

(EIS) – Proposed Plan. U.S. Department of the Interior, Bureau of Land Management, Idaho State Office.

Connelly, J. W., K. P. Reese, and M. A. Schroeder. 2003. Monitoring of greater sage-grouse habitats and population. Station Bulletin 80. College of Natural Resources Experiment Station, College of Natural Resources, University of Idaho, Moscow, Idaho.

Garton, E. O., J. W. Connelly, J. S. Horne, C. A. Hagen, A. Moser, and M. A. Schroeder. 2011. Greater sage-grouse population dynamics and probability of persistence. *Studies in Avian Biology* 38: 293-382.

Governor's Sage-grouse Task Force. 2012. Federal Alternative of Governor C.L. "Butch" Otter for Greater Sage-grouse Management in Idaho. September 5, 2012 Version. Available at: <http://fishandgame.idaho.gov/public/wildlife/SGtaskForce/alternative.pdf>

Scheaffer, R. L., W. Mendenhall, III, and R. L. Ott. 1986. Elementary survey sampling. Wadsworth Publishing, Belmont, California.



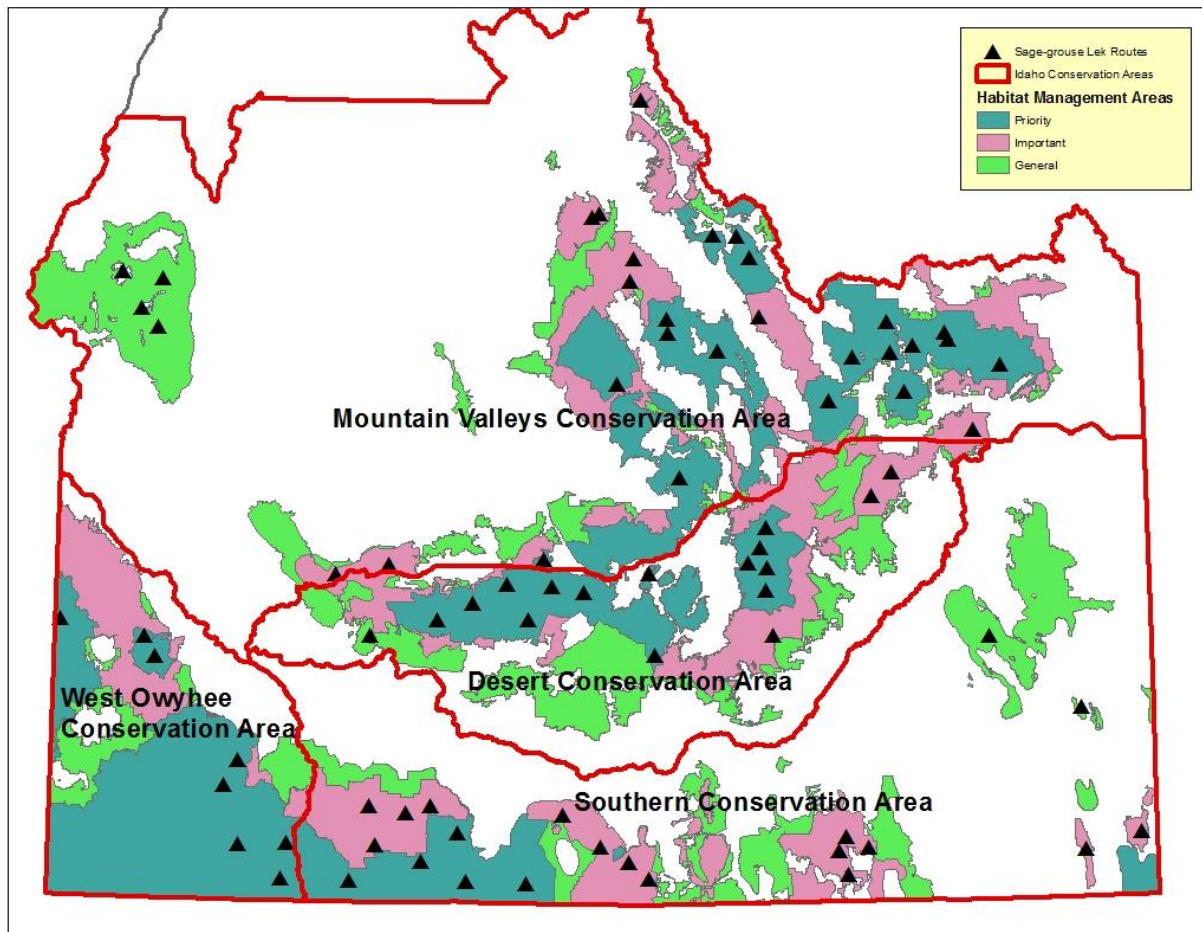


Figure 1. Location of sage-grouse lek routes in each Conservation Area and Habitat Management Area.



**Table 1. Estimate of number of leks to count by Conservation Area and Habitat Management Area (HMA) in Idaho in 2018, statistical sample needed of leks counted in 2016 and 2018 for lambda estimation, and actual 2018 results.**

Conservation Area/HMA	Total leks <sup>a</sup>	# of leks on lek routes <sup>b</sup>	Total leks to count 2018 <sup>c</sup>	Actual # leks counted 2018 <sup>d</sup>	Sample size needed of leks counted 2016 & 2018 <sup>e</sup>	Actual # leks counted 2016 & 2018	Statistical power reached
Desert Priority	443	152	217	300	54	206	Yes
Desert Important	124	28	88	99	50	77	Yes
Mountain Valleys Priority	380	142	233	257	75	186	Yes
Mountain Valleys Important	110	42	83	90	49	77	Yes
Southern Priority	223	45	154	181	101	137	Yes
Southern Important	274	66	183	222	85	135	Yes
West Owyhee Priority	292	39	98	174	35	133	Yes
West Owyhee Important	34	1	34	31	31	27	No
Desert General	42	4	6	20	NA	NA	NA
Mountain Valleys General	73	19	15	50	NA	NA	NA
Southern General	107	17	12	38	NA	NA	NA
West Owyhee General	3	0	3	3	NA	NA	NA
Not categorized or non-habitat	6	1	1	1	NA	NA	NA
Statewide	2111	556	1127	1466	480	978	--

<sup>a</sup> Leks in 2017 database.

<sup>b</sup> When ran in lambda analysis, lek route leks are separated from their lek route and assigned to the HMA they plot in (See Appendix A).

<sup>c</sup> Includes lek route leks, random leks, and database priorities.

<sup>d</sup> Includes 7 new leks.

<sup>e</sup> Number of leks that needed to be counted in both 2016 and 2018 to produce an estimate of  $\lambda \pm 0.20$  (Scheaffer et al. 1986).

Table 2. Lek triggers evaluation for lek routes and lambda ( $\lambda$ ) by Conservation Area/Habitat Management Area in Idaho, 2018.

Conservation Area/HMA	Total males on lek routes											Lambda ( $\lambda$ )		
	2011	2012	2013	2014	2015	2016	2017	2018	Current 3-year avg <sup>a</sup>	% change from 2011 <sup>b</sup>	Route trigger tripped <sup>c</sup>	$\lambda$ 2016 to 2018	90% confidence interval	$\lambda$ trigger tripped <sup>c</sup>
Desert Priority	1713	1434	1526	1394	1346	1710	1412	1097	1406	-18%	Soft	0.680	0.591 - 0.769	Yes
Desert Important	233	186	194	194	190	241	164	138	181	-22%	Hard	0.736	0.616 - 0.856	Yes
Mountain Valleys Priority	1790	1716	1456	1603	1589	1663	1439	1165	1422	-21%	Hard	0.713	0.616 - 0.810	Yes
Mountain Valleys Important	336	290	317	334	390	439	370	306	372	11%	No	0.718	0.606 - 0.830	Yes
Southern Priority	276	252	249	323	403	436	411	329	329	42%	No	0.965	0.789 - 1.141	No
Southern Important	586	489	470	466	596	640	556	455	550	-6%	No	0.615	0.519 - 0.711	Yes
West Owyhee Priority	693	600	527	566	837	1108	935	617	887	28%	No	0.643	0.585 - 0.701	Yes
West Owyhee Important	NA	NA	NA	NA	NA	NA	NA	NA	NA	NA	NA	0.488	0.245 - 0.731	Yes

<sup>a</sup> Current 3-year average.

<sup>b</sup> % change in current 3-year average from 2011 total.

<sup>c</sup> For a population trigger to trip, both lek route and lambda must meet the trigger requirements.

## Appendix A. Lek Routes.

Lek routes used in the population triggers analysis<sup>a</sup>, assigned Habitat Management Zone and Habitat Management Area and notes on assignments.

<b>Lek Route</b>	<b>Conservation Area</b>	<b>Governor's Alt Management Zone</b>	<b>BLM Habitat Management Area</b>	<b>Notes</b>
Antelope Creek	Mountain Valleys	Core	Priority	
Antelope Pocket	Southern	Core	Priority	Most of route in Priority
Big Desert #1	Desert	Core	Priority	
Big Desert #3	Desert	Core	Priority	Most of route in Priority
Big Desert #5	Desert	Core	Priority	
Big Jack's Creek	West Owyhee	Core	Priority	
Birch Creek	Southern	Important	Important	
Blair Trail	Desert	Important	Important	
Bliss-Hill City Road	Desert	Core	Priority	
Bloomington	Southern	Important	Important	
Brown's Bench	Southern	Core	Priority	
Brown's Creek	West Owyhee	Important	Priority	
Carlson Cabin	Mountain Valleys	Core	Priority	
Cottonwood Ridge	Southern	Important	Important	4 leks in Important, 3 in Priority; small pocket of Priority here
Cow Creek	West Owyhee	Core	Priority	
Crane Creek	Mountain Valleys	General	General	
Crooked Creek	Mountain Valleys	Core	Priority	
Crow's Nest-Clover	Southern	Important	Important	Only occupied lek is in Important, others in Important, 1 in general, 3 not in mapped habitat
Curlew East	Southern	Important	Important	1 lek in non-habitat
Curlew North	Southern	Important	Important	1 lek in non-habitat
Curlew South	Southern	Important	Important	2 leks in non-habitat
Curlew West	Southern	Important	Important	
Dishpan	Southern	Core	Priority	
Dry Creek	Southern	Core	Important	
Dry Gulch	Mountain Valleys	Important	Important	

<b>Lek Route</b>	<b>Conservation Area</b>	<b>Governor's Alt Management Zone</b>	<b>BLM Habitat Management Area</b>	<b>Notes</b>
EIU Sheep Creek (2B032 only)	Southern	Important	Important	2B032 was only lek counted in 2011, it is in Important
Fingers Butte	Desert	Core	Priority	Most of route in Priority
Fir Grove	Desert	Core	Priority	
Grassy Hills	Southern	Core	Priority	
INL/Tractor Flat	Desert	Important	Important	1 lek in General
Jacoby	Mountain Valleys	Core	Priority	
Kinyon	Southern	Important	Important	
Leadore East	Mountain Valleys	Core	Priority	
Leadore West	Mountain Valleys	Core	Priority	1 lek in non-habitat
Lidy	Mountain Valleys	Core	Priority	3 leks in non-habitat
Lincoln/Minidoka	Desert	Core	Priority	1 lek in General
Little Hat Creek	Mountain Valleys	Important	Important	
Little Lost	Mountain Valleys	Core	Priority	
Little Sagehen Flat	Mountain Valleys	Important	Important	
Lower Birch Creek	Mountain Valleys	Core	Priority	
Lower Lemhi	Mountain Valleys	Important	Important	
Lower Pahsimeroi East	Mountain Valleys	Important	Important	
Lower Pahsimeroi West	Mountain Valleys	Important	Important	
Macon Flat	Desert	Core	Priority	
Medicine Lodge	Mountain Valleys	Core	Priority	2 leks in non-habitat
Middle Mountain	Southern	Important	Important	
Midvale Hill	Mountain Valleys	General	General	
Monday Gulch	Mountain Valleys	General	General	
Moore's Flat	Mountain Valleys	Important	Important	
North Shoshone	Desert	Core	Priority	
Oreana	West Owyhee	Important	Priority	1 lek in Important
Paddelford Flat	Desert	Core	Priority	1 lek in non-habitat
Picabo	Desert	Core	Priority	1 lek in non-habitat
Plano	Mountain Valleys	Important	Important	
Red Road	Mountain Valleys	Core	Priority	4 leks in Important, 6 in Priority
Rock Creek	Mountain Valleys	Important	Priority	Most of route in Priority
Rocky Knoll	West Owyhee	Core	Priority	
Roland Road	West Owyhee	Core	Priority	

<b>Lek Route</b>	<b>Conservation Area</b>	<b>Governor's Alt Management Zone</b>	<b>BLM Habitat Management Area</b>	<b>Notes</b>
Roseworth	Southern	Important	Important	5 leks in Important, 2 in Priority
RWMC/INL	Desert	Core	Priority	5 leks in Priority, 3 in Important
Sheep Creek	West Owyhee	Core	Priority	
Sheep Station	Mountain Valleys	Core	Priority	
Shoshone Basin	Southern	Core	Priority	
Slug Creek	Southern	General	General	
Soulen Center	Mountain Valleys	General	General	
South Big Desert	Desert	General	Important	
Stible Road	Desert	Important	Important	
Sunday Creek	Southern	General	General	
Table Butte	Mountain Valleys	Core	Priority	
Timmerman	Desert	Core	Priority	
Upper Big Lost	Mountain Valleys	Core	Priority	
Upper Birch Creek	Mountain Valleys	Core	Important	
Upper Lemhi	Mountain Valleys	Core	Priority	
Upper Pahsimeroi	Mountain Valleys	Core	Priority	
Wickahoney	West Owyhee	Important	Priority	
Yellow Sign Road	Southern	Core	Important	

<sup>a</sup> Two lek routes, Spring Gulch and Winter Camp, are not included because they were not surveyed in 2011.