

Idaho Sage-grouse Actions Team

July 1, 2022

Idaho Sage Grouse Conservation Accomplishments in FY22: *Implementing the Governor’s Sage Grouse Conservation Strategy*

The Idaho Governor’s Office of Species Conservation (OSC) and the Idaho Department of Lands (IDL) have been working with the Idaho Department of Fish and Game (IDFG) and other partners to improve habitat conditions across southern Idaho for sage grouse and other wildlife. This work not only benefits the wildlife, but also the people of Idaho who recreate and make a living here. The State of Idaho works with private landowners, federal agencies, and other entities to implement Executive Order 2022-03 (2021 Idaho SG Plan). In State Fiscal Year 2022 (FY22) the Idaho Legislature helped to continue these efforts through its budget authorizations to OSC and IDL. Each year the Legislature authorizes these funds, which act as an investment to improve Idaho and hold back invasive annual grasses, noxious weeds, wildfire, and juniper encroachment. All of this helps to keep sage grouse off the endangered species list. The Sage-grouse Actions Team requests projects from across southern Idaho each year. In FY22 they funded 23 conservation projects for \$2.3 million, which on average leveraged **\$2.17 for every state general fund dollar spent**. These efforts resulted in more than **\$1.8 million** in collaborative conservation and wildfire rehabilitation. There were also 7 RFPAs assisted with wildland firefighting tools and protective equipment (PPE) for over \$60K. Many times, the State General Fund dollars are used as match to bring other funding sources to Idaho such as the Cheatgrass Challenge and grants through the National Fish and Wildlife Foundation.

- FY22 Projects**
- \$1.8 million leveraged**
 - 4,153 ac. - Conifer Treatment
 - 3,365 ac. – Annual Grass Treatment
 - 112 acres of sagebrush planting
 - 413 acres of Wet Meadow Enhance
 - 1,343 Leks Counted (682 Active)
 - U of I Grouse and Grazing Study
 - IRCP Coordinator Position
 - BOSH Coordinator Position
 - 7 Rangeland Fire Protection Assns. (RFPAs) Assisted
 - 19 sets of PPE for RFPAs
 - 19 shrouds, 10 helmets
 - 5 first aid kits and 9 headlamps
 - 26 fire shelters, 29 Fireline packs
 - 3 Slip In pumps
 - Other supplies (wrenches, hoses, torches, batteries, adapters)

The Sage-grouse Actions Team has leveraged funds since May 2015 to implement conservation for sage-grouse. The group contains the state agencies charged with implementing the 2021 Idaho SG Plan– OSC, IDL, and IDFG and includes assistance from the Idaho Department of Agriculture (ISDA) and the Idaho Soil and Water Conservation Commission (ISWCC). Local federal agency partners include the Bureau of Land Management (BLM), the Natural Resources Conservation Service (NRCS), U.S. Forest Service (USFS), the U.S. Fish and Wildlife Service (USFWS), and nonprofit groups like the Idaho Rangeland Conservation Partnership (IRCP) and The Nature Conservancy (TNC).

Priorities for funding include restoring areas that have been degraded by wildfire, juniper encroachment and invasive annual grasses, improving brood rearing habitat, helping equip RFPAs to improve fire suppression capabilities and enhancing the monitoring of sage grouse activity.

FY23: Contracts that obligated to date and will be implemented in FY23 - \$409K

FY 23: Types of Projects	Number of acres of Expected Benefit	Number of Projects
Wildfire Rehab Buffer	\$150,000 seed and herbicide if needed	TBD
Conifer Treatment	6,940 acres	2
Wet Meadow/Stream Improvement	22 acres, 2 mi., 200 acres weed control	2
Fuel Breaks	168 acres	1

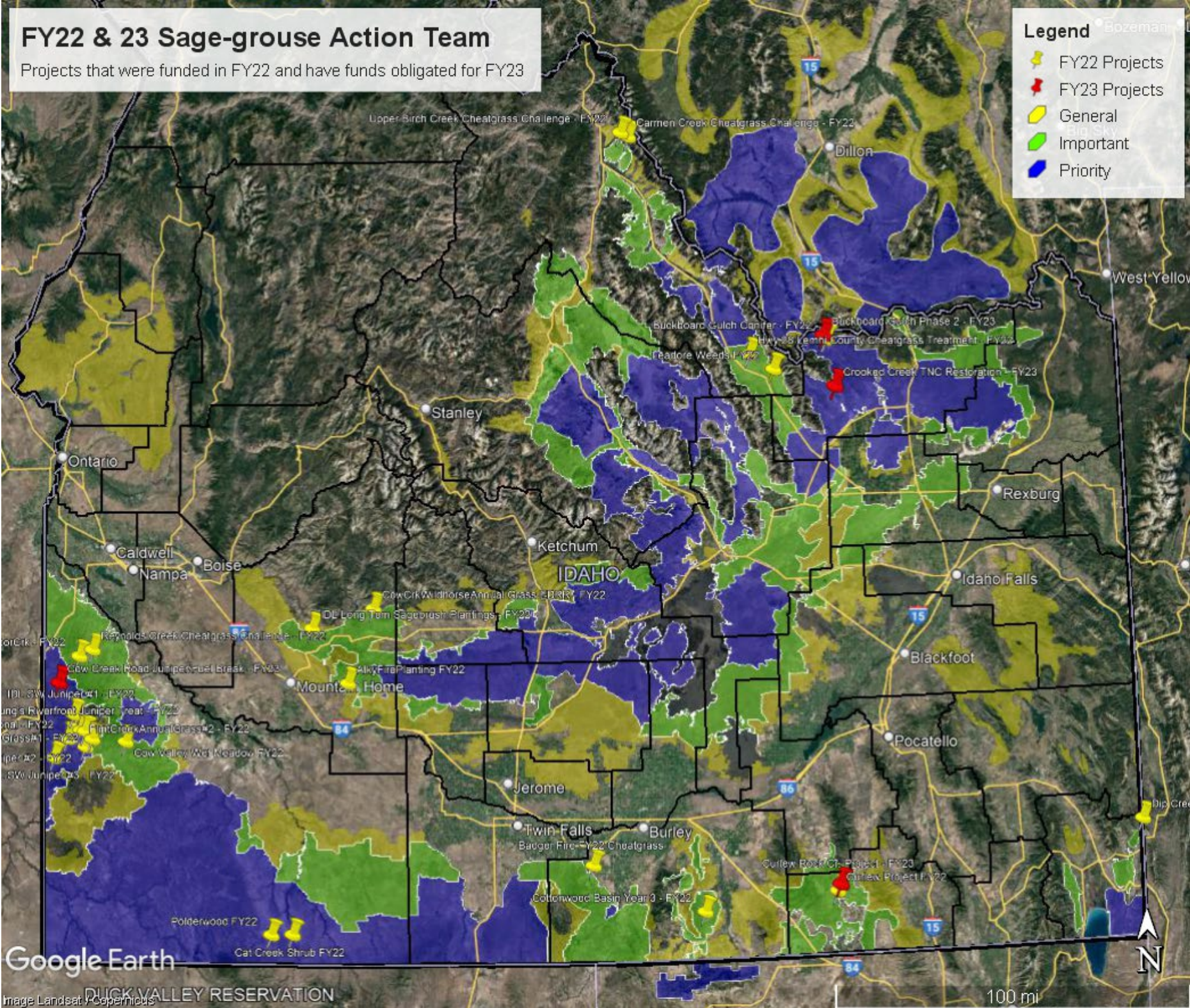
For more information Contact: Joshua Uriarte – OSC 208-334-2189; Joshua.uriarte@osc.idaho.gov

FY22 & 23 Sage-grouse Action Team

Projects that were funded in FY22 and have funds obligated for FY23

Legend

-  FY22 Projects
-  FY23 Projects
-  General
-  Important
-  Priority



Google Earth

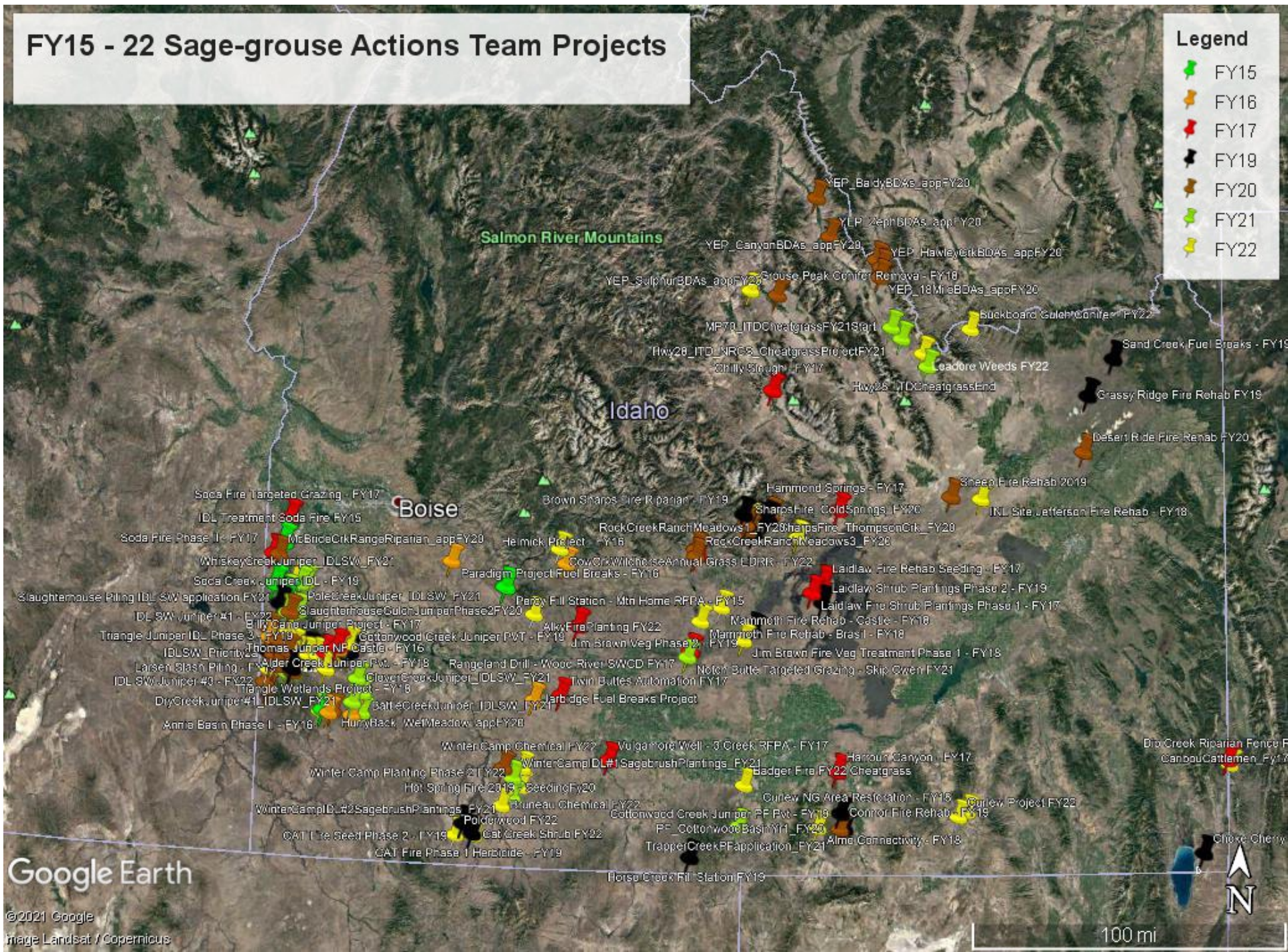
Image Landsat / Copernicus

100 mi

FY15 - 22 Sage-grouse Actions Team Projects

Legend

- FY15
- FY16
- FY17
- FY18
- FY20
- FY21
- FY22



Google Earth

©2021 Google
Image Landsat / Copernicus



100 mi