

## Idaho Sage-grouse Actions Team

February 1, 2024

### Idaho Sage Grouse Conservation Accomplishments in FY23: *Implementing the Governor’s Sage Grouse Conservation Strategy*

The Idaho Governor’s Office of Species Conservation (OSC) and the Idaho Department of Lands (IDL) have been working with the Idaho Department of Fish and Game (IDFG) and other partners to improve habitat conditions across southern Idaho for sage grouse and other wildlife. This work not only benefits the wildlife, but also the people of Idaho who recreate and make a living here. The State of Idaho works with private landowners, federal agencies, and other entities to implement Executive Order 2022-03 (2021 Idaho SG Plan). In State Fiscal Year 2023 (FY23) the Idaho Legislature helped to continue these efforts through its budget authorizations to OSC and IDL. Each year the Legislature authorizes these funds, which act as an investment to improve Idaho and hold back invasive annual grasses, noxious weeds, wildfire, and juniper encroachment. All of this helps to keep sage grouse off the endangered species list. The Sage-grouse Actions Team requests projects from across southern Idaho each year. In FY23, 5 conservation projects were funded which on average leveraged **\$1.34 for every state general fund dollar spent**. These efforts resulted in more than **\$1.2 million** in collaborative conservation. There were also 10 RFPAs assisted with an offset to their insurance, wildland firefighting tools and protective equipment (PPE) for over \$52K. Many times, the State General Fund dollars are used as match to bring other funding sources to Idaho such as the Cheatgrass Challenge and grants through the National Fish and Wildlife Foundation.

- FY23 Projects**
- \$600,000 leveraged**
  - 6,637 ac. - Conifer Treatment
  - 524 ac. – Annual Grass Treatment
  - 200 acres of weed control
  - 23 acres of Wet Meadow Enhance
  - 1,074 Leks Counted (587 Active)
  - U of I Grouse and Grazing Study
  - IRCP Coordinator Position
  - BOSH Coordinator Position
  - 10 Rangeland Fire Protection Assns. (RFPAs) Assisted with Insurance
  - 28 sets of PPE for RFPAs
  - 16 shrouds, 23 helmets,
  - 17 headlamps, 11 goggles
  - 19 fire shelters, 19 Fireline packs
  - 1 RFPAs Communication Repeater

The Sage-grouse Actions Team has leveraged funds since May 2015 to implement conservation for sage-grouse. The group contains the state agencies charged with implementing the 2021 Idaho SG Plan– OSC, IDL, and IDFG and includes assistance from the Idaho Department of Agriculture (ISDA) and the Idaho Soil and Water Conservation Commission (ISWCC). Local federal agency partners include the Bureau of Land Management (BLM), the Natural Resources Conservation Service (NRCS), U.S. Forest Service (USFS), the U.S. Fish and Wildlife Service (USFWS), and nonprofit groups like the Idaho Rangeland Conservation Partnership (IRCP) and The Nature Conservancy (TNC).

Priorities for funding include restoring areas that have been degraded by wildfire, juniper encroachment and invasive annual grasses, improving brood rearing habitat, helping equip RFPAs to improve fire suppression capabilities and enhancing the monitoring of sage grouse activity. Below are the FY24 agreements for obligated funds.

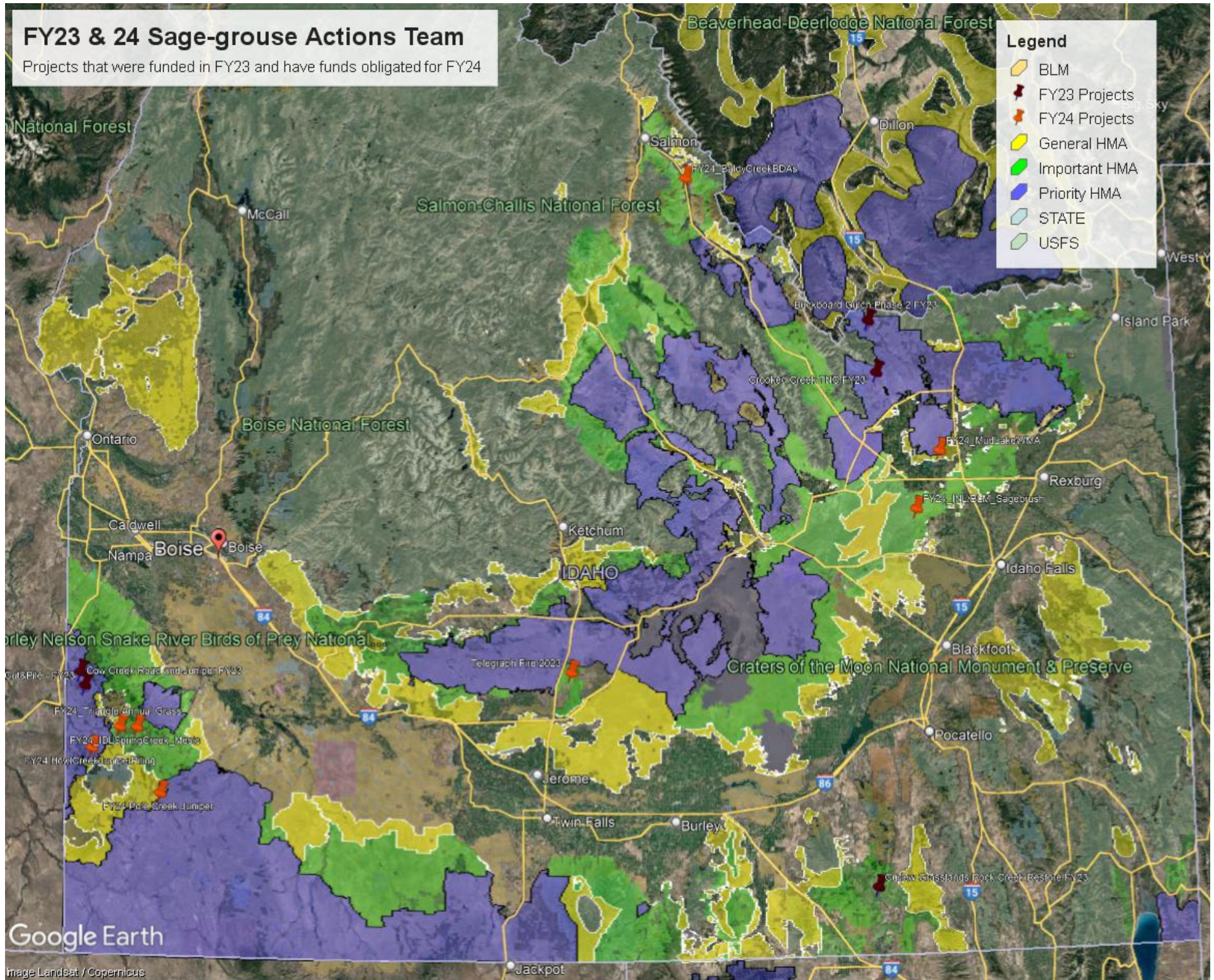
**FY24: Contracts that obligated to date and will be implemented in FY24 - \$401K**

FY 24: Types of Projects	Number of acres of Expected Benefit	Number of Projects
Wildfire Rehab – Telegraph Fire	239 acres of state, 1,142 acres of BLM	1
Conifer Treatment/Annual Grass	2583 acres/3,122 acres	4/2
Sagebrush Seeding	2,000 acres	1
Wet Meadow/Stream Improvement	5 miles, 62 acres, 40+ riparian structures	5
Fuel Breaks	393 acres	1

For more information Contact: Joshua Uriarte – OSC 208-334-2189; [Joshua.uriarte@osc.idaho.gov](mailto:Joshua.uriarte@osc.idaho.gov)

# FY23 & 24 Sage-grouse Actions Team

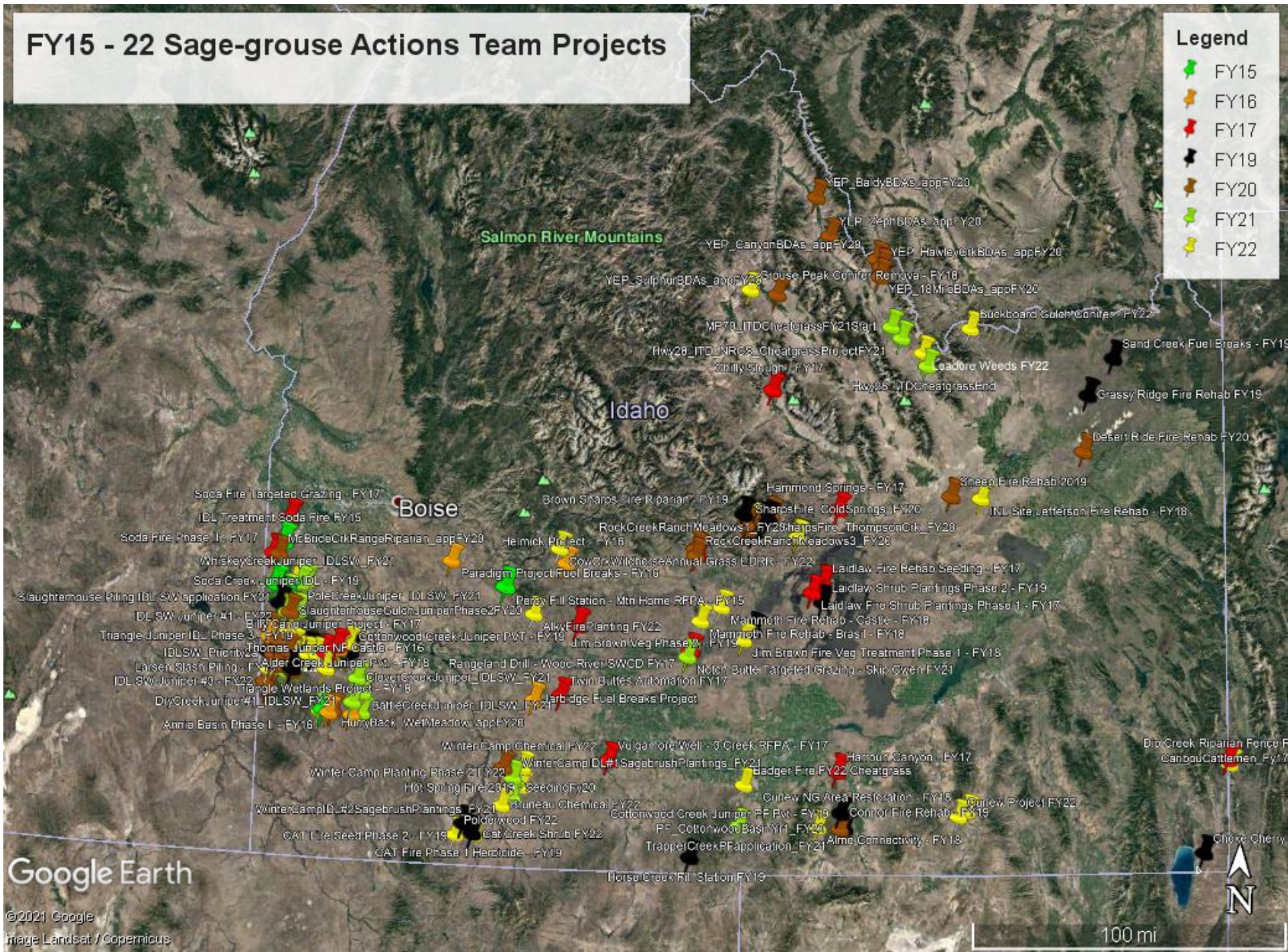
Projects that were funded in FY23 and have funds obligated for FY24



# FY15 - 22 Sage-grouse Actions Team Projects

**Legend**

- FY15
- FY16
- FY17
- FY18
- FY20
- FY21
- FY22



Google Earth

©2021 Google  
Image Landsat / Copernicus

100 mi