

OFFICE OF SPECIES CONSERVATION

BRAD LITTLE
Governor

MICHAEL R. EDMONDSON
Administrator



P.O. Box 83720
Boise, Idaho 83720-0195

304 N. Eighth Street, Suite 149
Boise, Idaho 83702-5833

Wolf and Grizzly Bear Conflict Prevention Program FY25/FY26 Program Update

1/21/2026

The Idaho Governor's Office of Species Conservation (OSC) has been working with the Idaho State Department of Agriculture (ISDA) and the Idaho Department of Fish and Game (IDFG) to create and implement the Wolf and Grizzly Bear Conflict Prevention Program. The State of Idaho works with livestock producers, local organizations, and youth who participate in 4-H or FFA to implement the conflict prevention program. The Idaho Legislature authorized \$75,000 for State Fiscal Year (FY)25 and an additional \$75,000 for FY26 in state funding, which signifies a large investment by the state in reducing livestock conflicts with these predators, ultimately assisting in keeping wolves off the endangered species list and working toward the delisting of grizzly bears. OSC had \$133,507 in available funding from grants awarded by the US Fish and Wildlife Service through the Wolf Livestock Loss Prevention Grant (WLLPG) during FY25 and FY26.

For FY25 and FY26, the team chose to have a year-round application period to allow for the continued marketing of the program and to gain more interest. Due to the state rulemaking process, projects for FY25 could not begin until spring of 2025. For the FY25/FY26 funding 24 projects have been completed using state funds (See Table 1). These projects include 5-strand electric fence, the purchase of two guard dogs, range riding, game cameras, thermal binoculars, as well as assistance with electric fencing labor and energizers. With these funds, OSC assisted in building 20,000 linear feet of electric fence and reimbursed producers for 2,731 hours of range riding. 13 of the 24 projects are in Bonner or Boundary County where OSC has a full-time staff position. With the federal funds from the WLLPG, OSC was able to assist an additional 14 livestock producers in 2025 with wolf conflict prevention (See Table 2). Federal funds reimbursed producers for 2,656 hours of range riding, game cameras, guard dog food, and collar lights.

There is currently an estimated \$28,888.19 remaining from H592 funds for FY26. The plan is for this money to go towards projects that will be completed in the spring and summer of 2026. There is currently an application period for FY27 projects that will run through March 1, 2026. Calendar year 2026 projects will be funded with the remaining FY26 funds, the additional \$75,000 from FY27 funds, and \$60,000 from the federal WLLPG.

See Table 3 below for a summary of each funding source.

Table 1: Wolf and grizzly bear conflict prevention projects funded with State dollars (H592) in FY25/FY26.

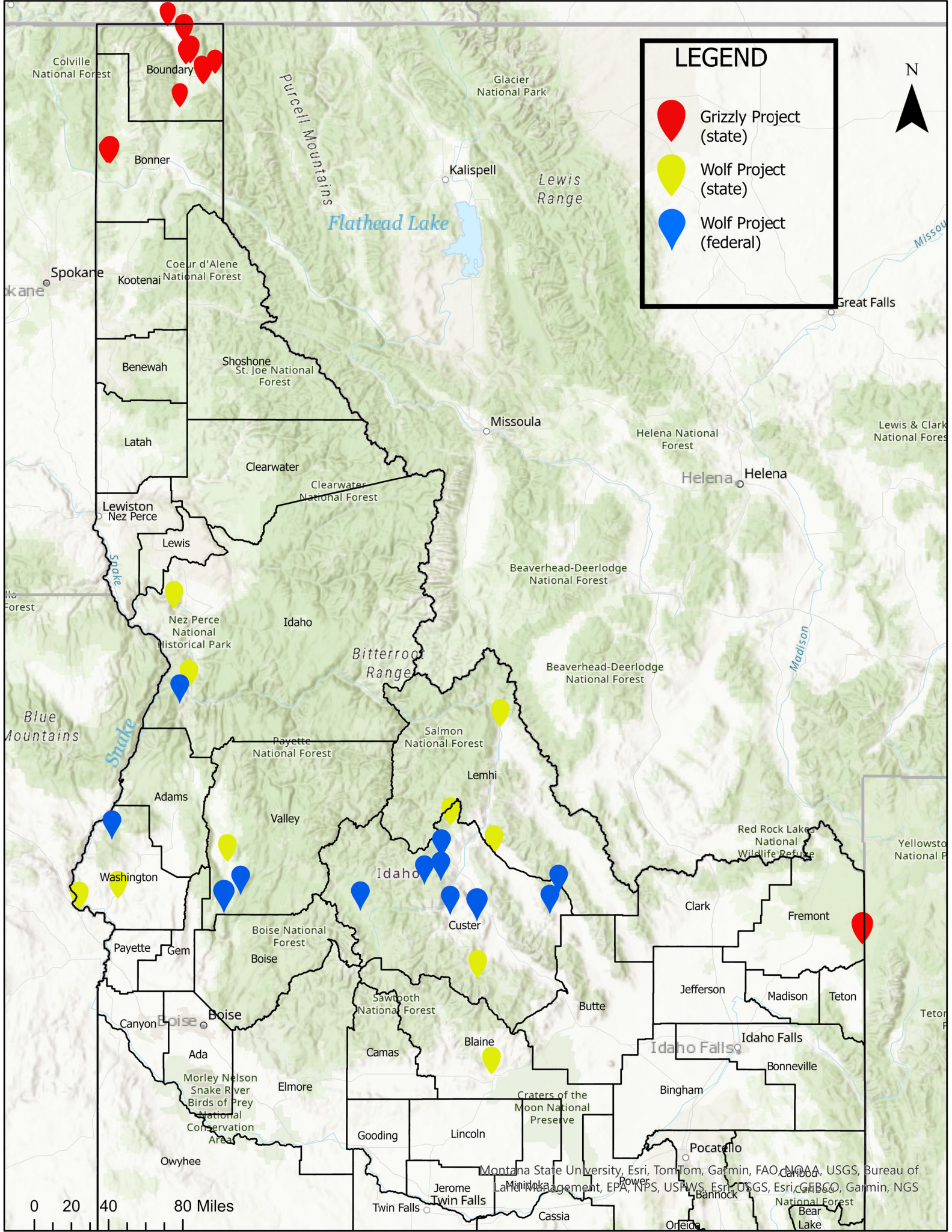
PRODUCER	COUNTY	SPECIES	PROJECT DESCRIPTION	COST
Producer 1	Bonner	Grizzly	Electric fence	\$3,205.53
Producer 2	Boundary	Grizzly	Electric fence	\$1,601.85
Producer 3	Boundary	Grizzly	Electric fence	\$2,942.72
Producer 4	Boundary	Grizzly	Electric fence	\$5 938.16
Producer 5	Boundary	Grizzly	Electric fence	\$5,968.33
Producer 6	Washington	Wolves	Livestock guard dogs	\$4,400.00
Producer 7	Bonner	Grizzly	Electric fence	\$1,955.52
Producer 8	Boundary	Grizzly	Electric fence	\$5,001.32
Producer 9	Lemhi	Wolves	Range riding	\$6,500.00
Producer 10	Blaine	Wolves	Garmin InReach and range riding	\$6,467.07
Producer 11	Idaho	Wolves	Range riding	\$6,500.00
Producer 12	Idaho	Wolves	Game cameras and range riding	\$6,500.00
Producer 13	Lemhi	Wolves	Range riding	\$6,500.00
Producer 15	Washington	Wolves	Range riding	\$6,500.00
Producer 16	Custer	Wolves	Range riding	\$6,500.00
Producer 17	Custer	Wolves	Game cameras and range riding	\$6,419.39
Producer 18	Fremont	Grizzly	Range riding, game cameras, thermal binoculars	\$17,999.80
Producer 19	Boundary	Grizzly	Electric fence	\$6,500.00
Producer 20	Boundary	Grizzly	Electric fence	\$2,134.00
Producer 21	Bonner	Grizzly	Guard dog food	\$1,300.00
Producer 22	Boundary	Grizzly	Electric fence	\$4,636.60
Producer 23	Boundary	Grizzly	Electric fence	\$4,768.52
Producer 24	Bonner	Grizzly	Electric fence	\$873.00
TOTAL				\$121,111.81

Table 2:Wolf conflict prevention projects: federal dollars from the Wolf Livestock Loss Prevention Grant (WLLPG)

PRODUCER	COUNTY	SPECIES	PROJECT DESCRIPTION	COST
Producer 1	Valley	Wolves	Range riding and game cameras	\$3,500.00
Producer 2	Custer	Wolves	Range riding	\$6,500.00
Producer 3	Boise	Wolves	Guard dog food	\$1,491.48
Producer 4	Custer	Wolves	Range riding	\$6,500.00
Producer 5	Idaho	Wolves	Range riding and game cameras	\$6,500.00
Producer 6	Custer	Wolves	Range riding	\$6,500.00
Producer 7	Washington	Wolves	Guard dog food	\$1,997.37
Producer 8	Custer	Wolves	Range riding	\$6,500.00
Producer 9	Custer	Wolves	Range riding	\$6,500.00
Producer 10	Washington	Wolves	Range riding	\$6,500.00
Producer 11	Custer	Wolves	Range riding	\$6,500.00
Producer 12	Custer	Wolves	Range riding	\$6,500.00
Producer 13	Custer	Wolves	Range riding and game cameras	\$6,500.00
Producer 14	Boise	Wolves	Night herding and collar lights	\$6,125.00
TOTAL				\$78,113.85

Table 3: Summary of spending by fund source and species

Fund Source	Species	Amount
State of Idaho (H592)	Wolves	\$56,286.46
State of Idaho (H592)	Grizzlies	\$64,825.35
Federal Grant (WLLPG)	Wolves	\$78,113.85
TOTAL		\$199,225.66



LEGEND

-  Grizzly Project (state)
-  Wolf Project (state)
-  Wolf Project (federal)



0 20 40 80 Miles

Montana State University, Esri, TomTom, Garmin, FAO, NOAA, USGS, Bureau of Land Management, EPA, NPS, USFWS, Esri, USGS, Esri, GBCO, Garmin, NGS