

# OFFICE OF SPECIES CONSERVATION

**BRAD LITTLE**  
Governor



P.O. Box 83720  
Boise, Idaho 83720-0195

**MIKE EDMONDSON**  
Administrator

304 North Eighth Street, Suite 149  
Boise, Idaho 83702-5833

February 13, 2026

## **FY27 Request for Sage-grouse Habitat Restoration Projects**

The Idaho Governor's Office of Species Conservation (OSC) and Sage-Grouse Actions Team (Actions Team) are accepting proposals for sage-grouse habitat restoration projects. There will be \$500,000 available for funding projects contingent on approval by the legislature for state Fiscal Year 2027 (FY27) to implement actions outlined in the Governor's Sage-grouse Management Plan (2021 Idaho Plan) [https://gov.idaho.gov/wp-content/uploads/2022/03/Attachment1\\_2021IdahoPlan-FINAL.pdf](https://gov.idaho.gov/wp-content/uploads/2022/03/Attachment1_2021IdahoPlan-FINAL.pdf).

The Actions Team works with partners to secure and leverage additional funding to support sage-grouse conservation in Idaho.

OSC and the other state agencies charged with implementing the 2021 Idaho Plan (Idaho Department of Lands and Idaho Department of Fish and Game) partnered with federal agencies (FWS, BLM, USFS, NRCS) as well as the Idaho Soil and Water Conservation Commission, Idaho State Department of Agriculture, and The Nature Conservancy to create the Actions Team. The Actions Team meets annually to identify, prioritize, and fund projects that target the primary threats (habitat fragmentation/loss, invasive plant species, and wildfire), secondary threats (conifer encroachment, fence collisions, etc.) and limiting factors (degraded brood rearing habitat) to sage-grouse. Your role in sage-grouse conservation across Idaho's rangelands is crucial to benefit key habitat areas and support the economic vitality of rural communities in Idaho.

The grant application form/videos, ranking information and Request for Proposals (RFP) documents can be found on the OSC website (<https://species.idaho.gov/sage-grouse-actions-team/>). Or

Submit applications through the following link:

[Go to Sage-grouse Actions Team application link](#)

### **Deadlines:**

**February 13, 2026** – Application Period Open at 8:00 a.m. MST

**April 9, 2026** – Interactive Applicant Training Session (How to fill out application): 1 p.m. – 3 p.m. MDT

**May 1, 2026** - Proposals are due to OSC by 5:00 p.m. MDT

**May 26, 2026** - Actions Team meets to review proposals

- Applicants should reserve afternoon of May 26<sup>th</sup> to virtually discuss proposals.
- Microsoft Teams invite with set start time will be sent the week before meeting.
- Applicants can expect 10 - 15-minute meeting to give short overview, followed by questions from Actions Team

**May 29, 2026** – Applicants will be notified on the outcome of their proposal.

- OSC will start agreement process with successful applicants

**July 1, 2026** - Funds will be available to successful applicants

Projects must be within a mapped sage-grouse Habitat Management Area (HMA).

Funding will be prioritized for projects that address threats to sage-grouse, including:

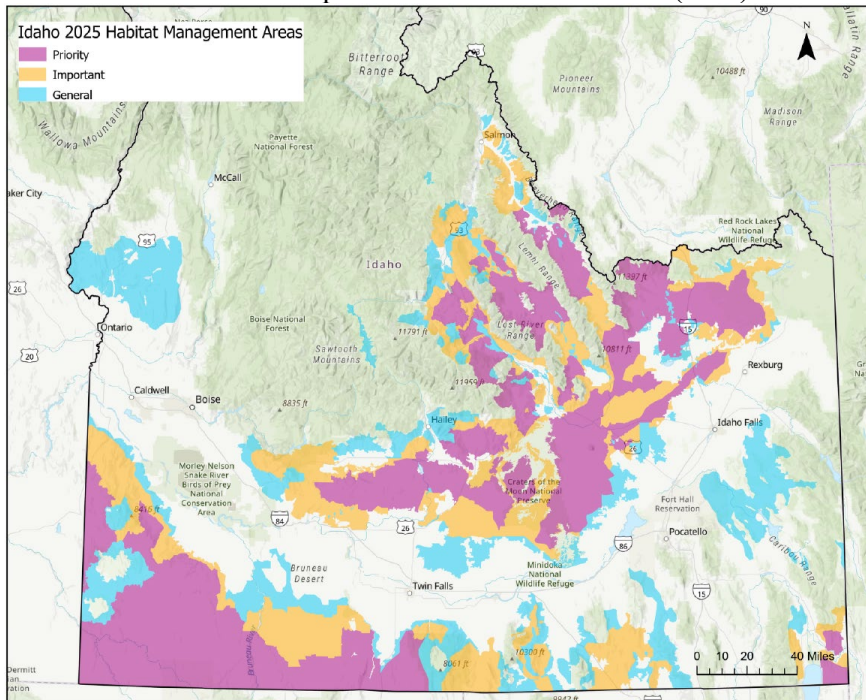
- Habitat Fragmentation
- Invasive annual grass treatment
- Conifer/Juniper treatment
- Wet meadow/riparian restoration
- Wildfire prevention (i.e. Strategic Fuel Breaks, Engine Fill Stations)

- Wildfire rehabilitation (sagebrush planting, seedings, etc.)

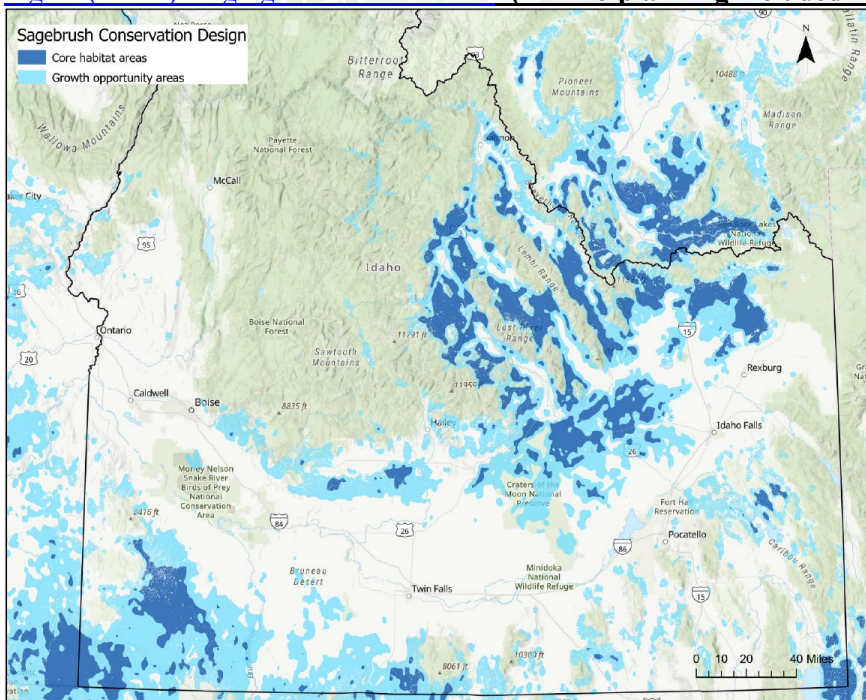
Project ranking criteria will also emphasize:

- Collaborative project proposals that span multiple land ownerships and benefit large landscapes
- Projects on state and private lands
- Projects that provide matching funds
- “Shovel ready” projects that can be completed by June 2027
- Core Sagebrush or Growth Opportunity Areas from USGS’s Sagebrush Conservation Design
  - (<https://pubs.usgs.gov/publication/ofr20221081>)

For additional information please contact Joshua Uriarte (OSC) at 208-332-1556, or [joshua.uriarte@osc.idaho.gov](mailto:joshua.uriarte@osc.idaho.gov).



**Figure (above): Sage-grouse HMAs - link: (BLM e-planning included in "2025 GRSG ROD-GIS.zip"file)**



**Figure (above): Sagebrush Conservation Design Priorities - link**

# Actions Team Evaluation Worksheet

THRESHOLD QUESTIONS will be used to determine if proposal is eligible:

- Is it in a Sage-grouse Habitat Management Area (HMA)?
- Is the application complete enough to review?
- Does it Address a Primary, Secondary threats or a limiting factor to sage-grouse
- Demonstrates sound principles that will benefit the sage steppe ecosystem
- Uses methods adapted to the project locale
- If applicable, has the applicant completed all projects and reporting requirements from previous SGAT or other grants within the last three years?

## Project Activity Criteria

Following Criteria and discussion will be used to help the Actions Team prioritize funding.

1. Does project positively affect Priority, Important, or General sage-grouse habitat? (Part II, 1 and 4)

**General - Low**

**Important - Medium**

**Priority - High**

2. Is the project in a Core or Growth area as defined by the Sagebrush Conservation Design?

**No – Low**

**Growth – Medium**

**Core - High**

3. Land ownership (Part II, 1) (Project components that directly affect the ownership)

**State, Tribal, Private – Good**

**More than one - Great**

4. The application adequately describes current conditions (Part II, 2) (Part II, 3).

**Range of Scores depending on how question is answered.**

5. Does the project address primary (habitat fragmentation, wildfire, invasive species), or secondary threats (conifer encroachment, degradation/loss of brood rearing habitat, fence collisions, etc.) to sage-grouse in that Fine Scale Area? (Part II, 3)

**Secondary – Low**

**Primary – High**

**Wet Meadows – Assign Additional**

**Sagebrush Establishment - Assign Additional**

**Durability (Long term benefits) – Assign Additional**

6. The application clearly defines the sage-grouse threat(s) and the how the project is expected to minimize the threat(s) (Part II, 3 and 4)

**Range of Scores depending on how question is answered.**

7. The project has clearly defined, measurable objectives.

**Range of Scores depending on how question is answered.**

8. The project (a) complements other efforts under way or completed in the surrounding landscape, and (b) is associated with a local, state, or regional strategic plan. (Part II, 2)

**Range of Scores depending on how question is answered.**



9. The proposed project schedule is well thought out and appears to be realistic. (Part II, 5)

**Range of Scores depending on how question is answered.**

10. Effectiveness Monitoring

**A) Not Identified: None**

**B) An appropriate monitoring program and monitoring outcomes are clearly identified OR project does not require monitoring to be considered an effective project. (Part II, 9): High**

## Admin and Fiscal Criteria

1. The budget (a) shows sufficient detail for all categories, (b) unit quantities/costs appear to be reasonable, appropriate, and consistent with local market rates or NRCS cost share rates.

**Range of Scores depending on how question is answered.**

2. The project has appropriate levels of involvement and support from the right parties and partners. (Partners are considered funding partners) (Part. II, 2 and 12)

**No Partners = None**

**1-2 Partners = Low**

**3 of more = High**

3. The applicant has match for the project. Applicant is awarded higher scores for more secured match. (Match is defined as something that directly affects the project) (Part II, 12)

**No = None**

**26-50% = Low**

**51-75% = Medium**

**>75% = High**