



Envisioning the Future Idaho Power

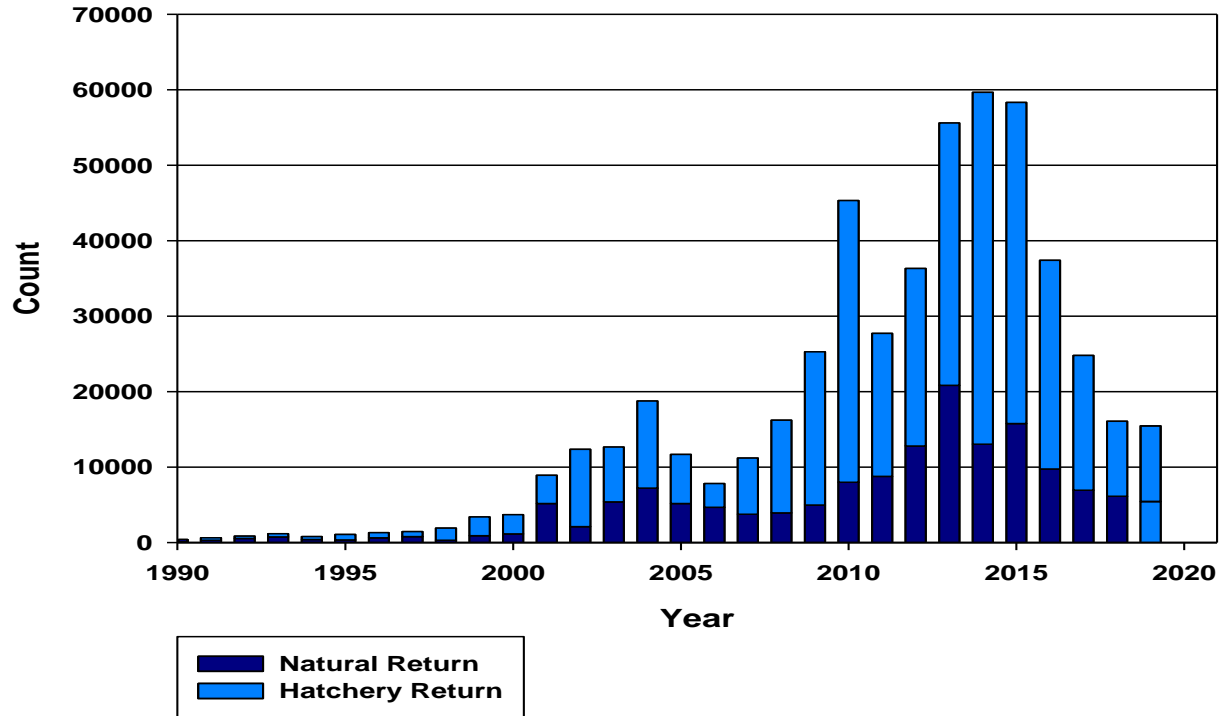
Brett Dumas
Salmon Working
Group
August 26, 2020

IPC Fisheries in Hells Canyon

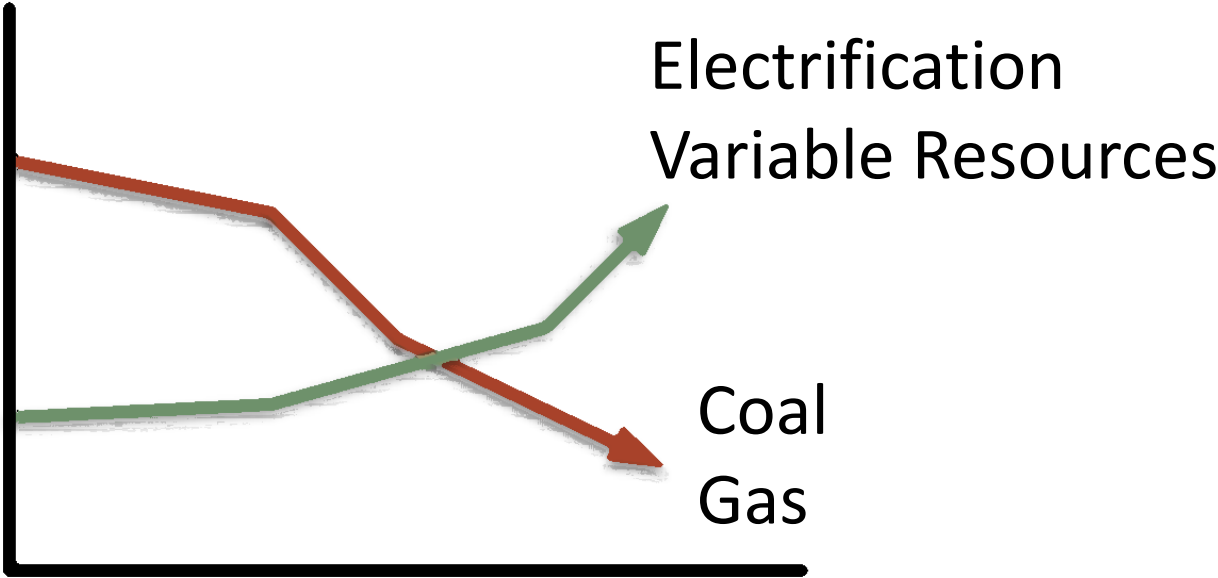


- Monitoring population dynamics & operation impacts
 - Fall Chinook salmon
 - Bull Trout
 - White Sturgeon
- 6.8M hatchery releases
- Investment in state of the art hatcheries

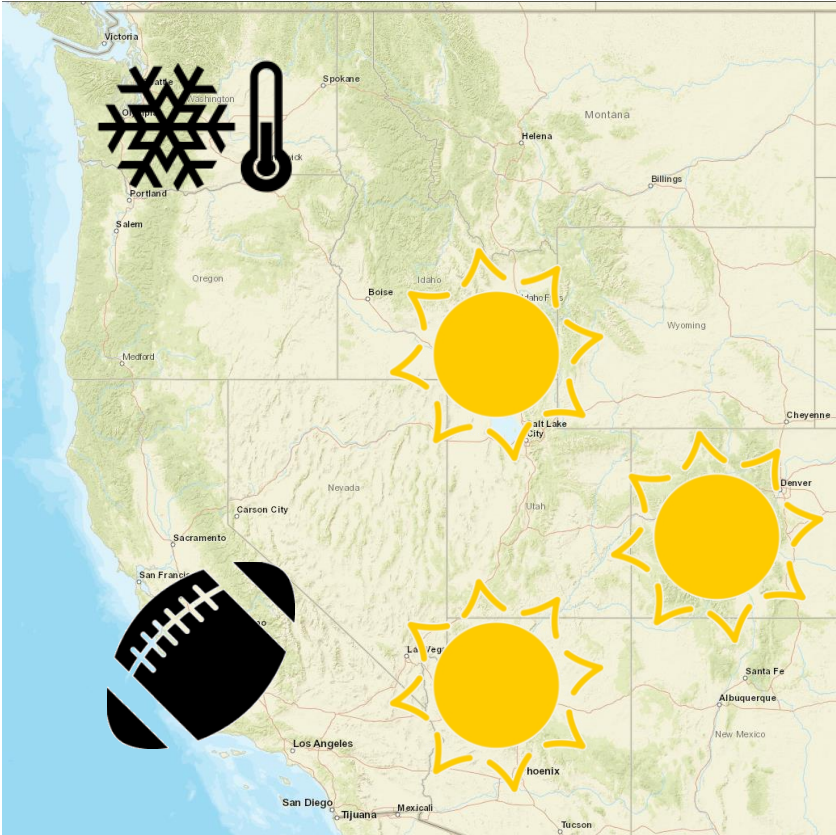
SR Fall Chinook Recovery



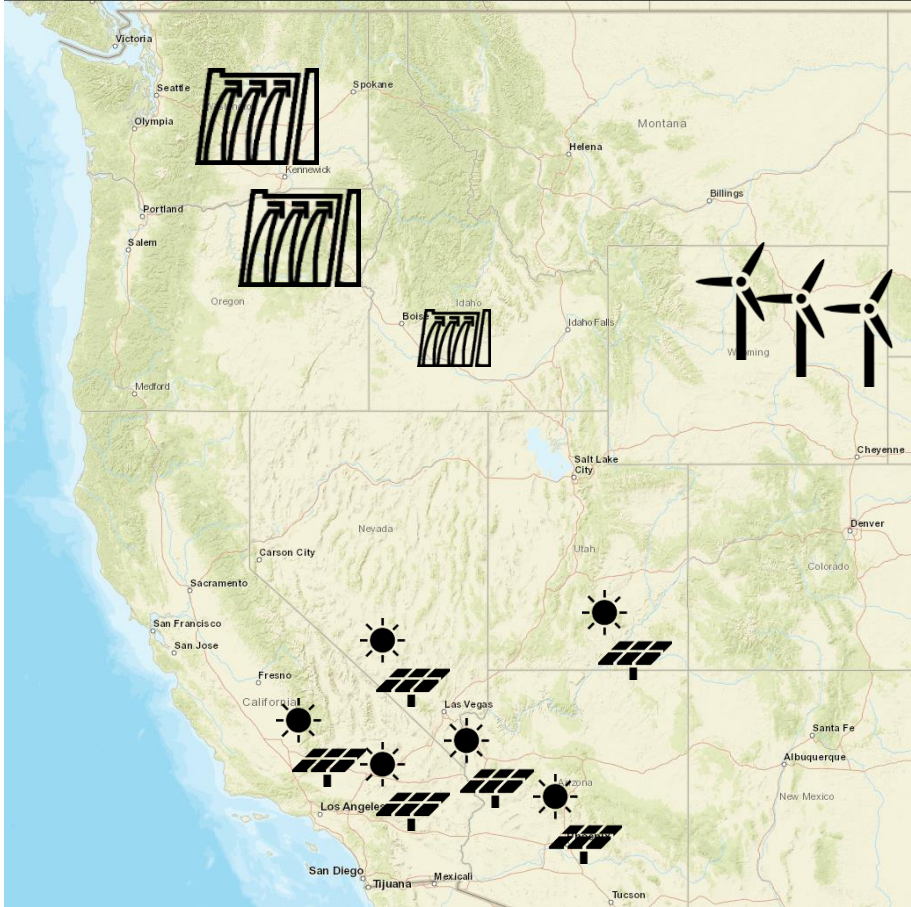
Electric Power – Future Trends



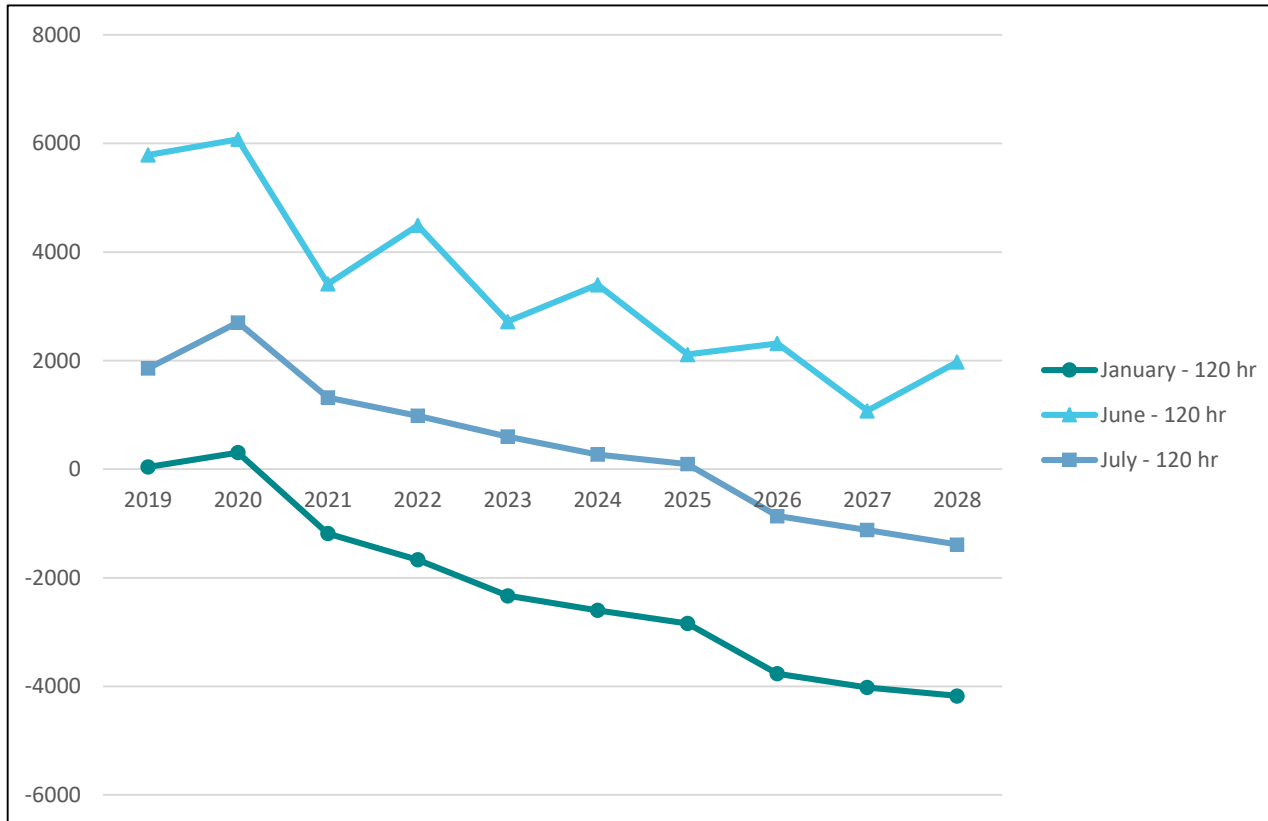
Current Load Diversity



Resource Diversity



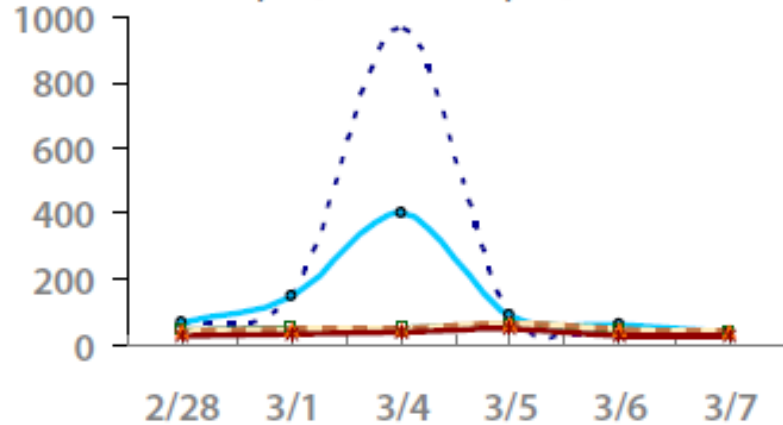
High Load Resource Capacity Under Low Water Conditions (BPA)



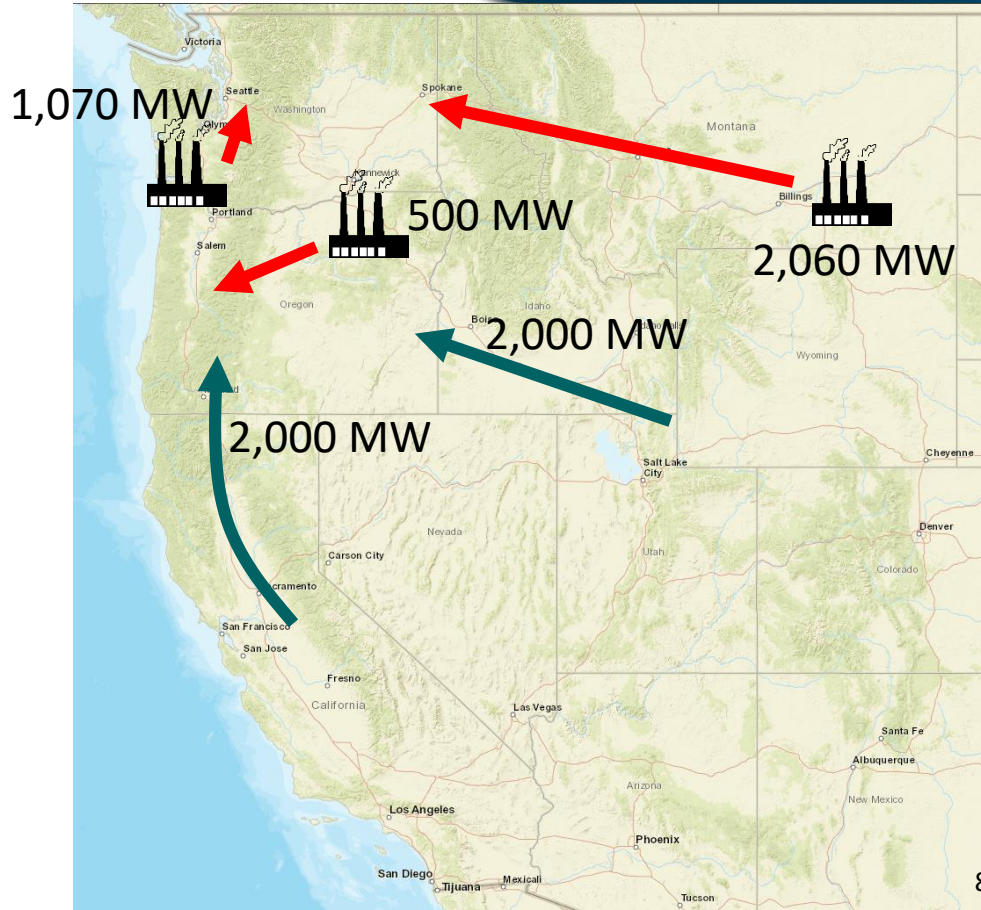
2018-2019 Winter

Average Peak Power Prices

Thurs., 02/28 - Thurs., 03/07



- Mid-Columbia ● COB ■ NP15
- ▲ SP15 ■ Palo Verde



Idaho Power

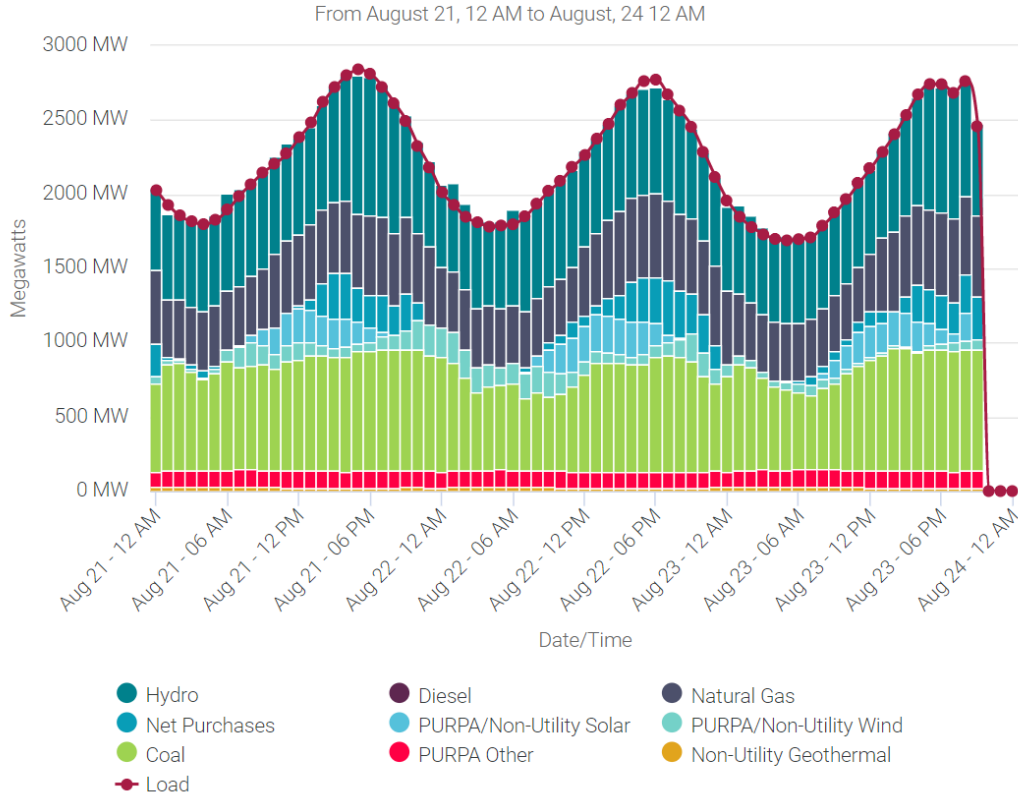


Our Purpose

We are passionate about powering lives with clean, reliable, affordable energy, while developing innovative solutions every day. Serving those who depend on us is at the center of everything we do. We all prosper by committing to the needs, safety and success of our customers, communities, employees and shareholders.

Idaho Power has a responsibility to meet customers' needs, no matter how they change, 24 hours a day, 365 days a year.

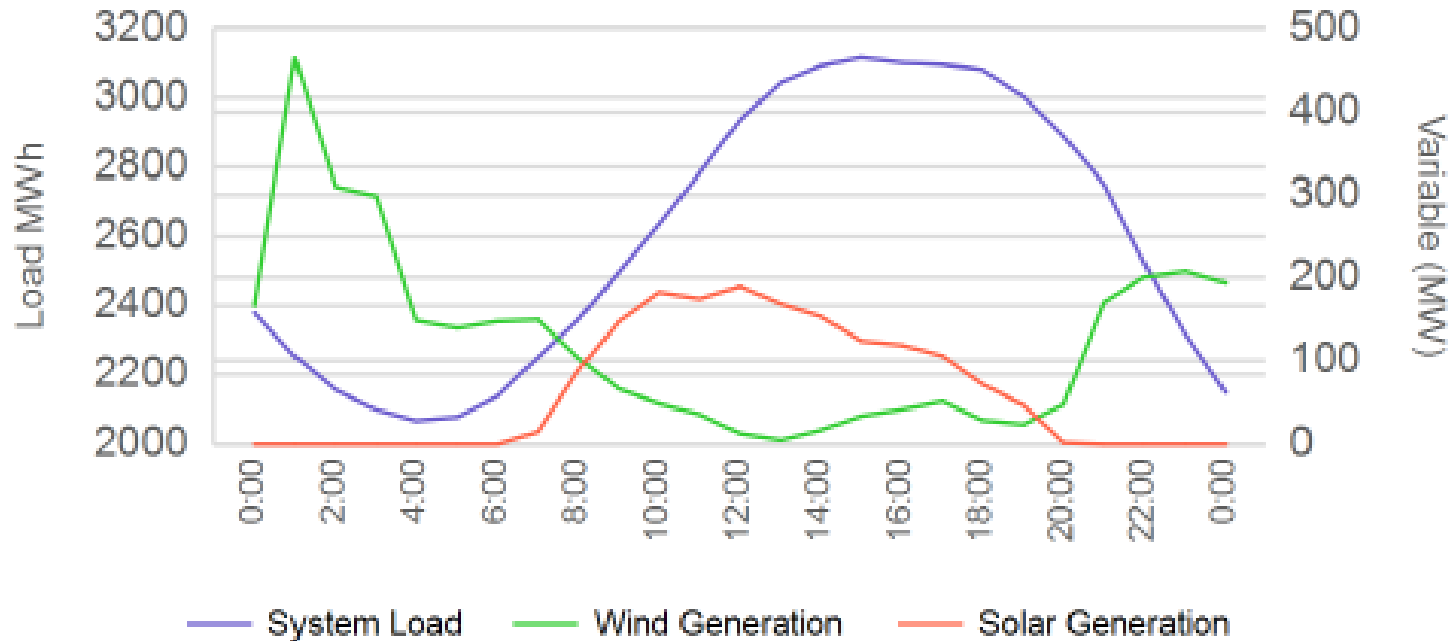
Hourly Generation vs. Demand



IPC: Tuesday, August 18th



Variable vs Load

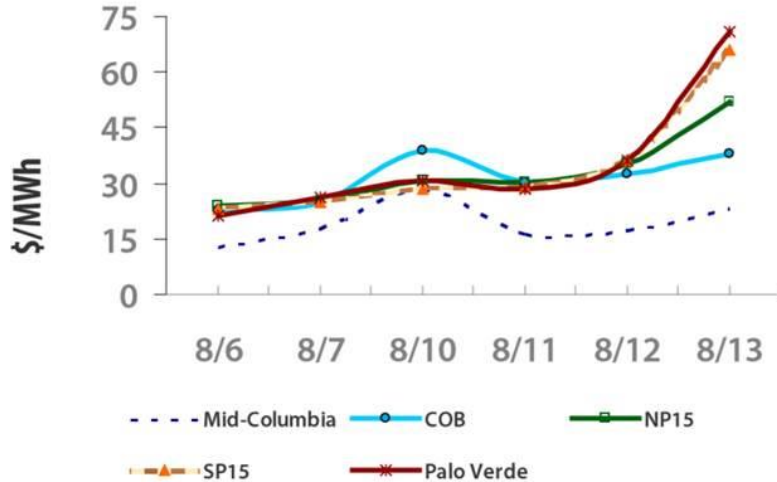


NW Power Prices – August 2020



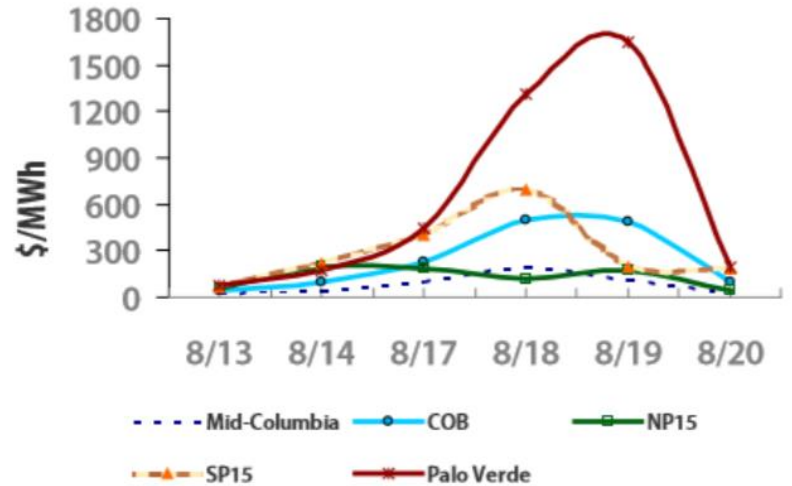
Average Peak Power Prices

Thurs., 08/06 - Thurs., 08/13



Average Peak Power Prices

Thurs., 08/13 - Thurs., 08/20



Envisioning the Future



- Continue to provide affordable, reliable, clean power
- What would replace the four LS dams?
 - Natural gas? Not in WA & OR
 - Nuclear? High cost, long permitting horizon, disposal
 - Wind and Solar? Intermittent resource – need storage & power lines
 - New Hydro? Hah! Maybe some pump-storage
 - Hydrogen? Has a long way to go
- Vision: Lower SR dams meeting energy needs with less impact on fish allowing for improved Idaho anadromous runs